

Accessories

Solenoid Controlled Pumps

Direct Mount Solenoid



Yamada Solenoid Controlled Pumps are ideal for applications where rough metering, batching, or merely a constant pump cycle speed is required. Available for DP-10, NDP-20, 25, 40, 50 and 80 Series Pumps, the solenoid kit can be remotely or directly mounted to the pump. In addition to ordering as a complete unit (with pump), the kit can be installed on an existing pump in the field by simply removing the air valve assembly and replacing it with either the direct or remote mount kit. The Yamada Solenoid Control can be utilized in conjunction with Yamada's YSC-1EX Controller or any PLC (Programmable Logic Controller).

Key Advantages

- Remote mount solenoid is ideal for explosion proof applications
- Retrofittable to existing pumps in the field
- Available with DIN, Grommet, or Pigtail electrical connections (see back)
- Simplifies preventative maintenance schedules (when using with controller)
- Can be utilized in conjunction with the Yamada YSC-1EX Controller
- Direct mount configuration is also available with out solenoid

Remote Mount Solenoid



The Proof's in the Pump

CALL TOLL FREE 800.990.7867

Yamada America, Inc.
955 East Algonquin Rd
Arlington Heights, IL 60005
Phone: 847.631.9200
Fax: 847.631.9273
www.yamadapump.com
sales@yamadapump.com

How to Order

Add the following to the standard pump ordered

S	XX	X	XXX	X	XX
Solenoid Valve	Size: 10 = DP10 20 = NDP-20/25 40 = NDP-40/50/80	1 = Single Solenoid 2 = Dual Solenoid	024 = 24VDC 115 = 115VAC	D = DIN G = Grommet P = Pigtail	EX = Remote Mount DM = Direct Mount

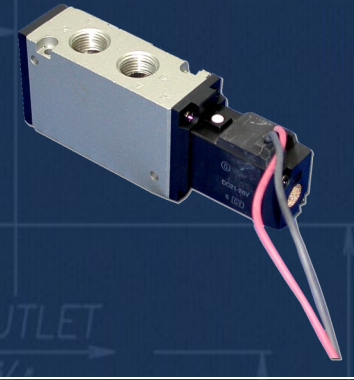
Example: NDP-25BST-S20-2024-DEX

NDP-20/25 Series Pump, 24VDC, DIN Connection, Remote Mount.

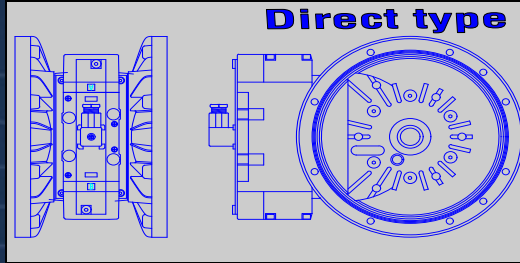
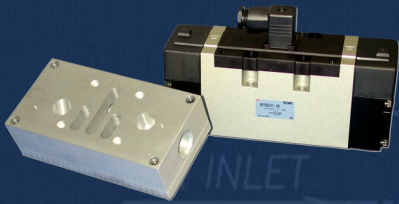
Remote mounting plate can be ordered on pump without ordering the solenoid valve.

(Consult Yamada)

Pigtail Connection

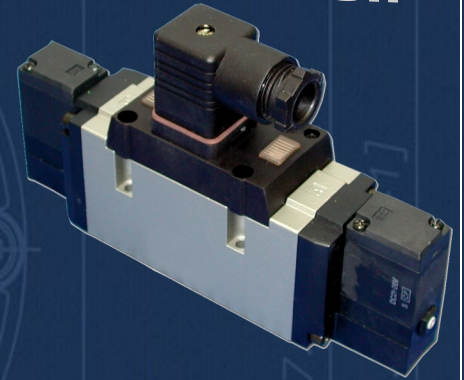


Valve Types

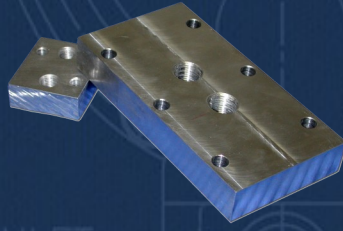
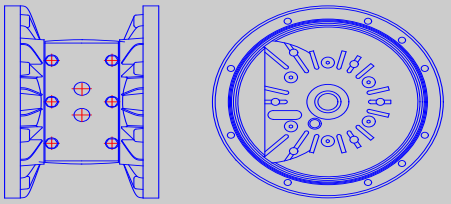


Direct type

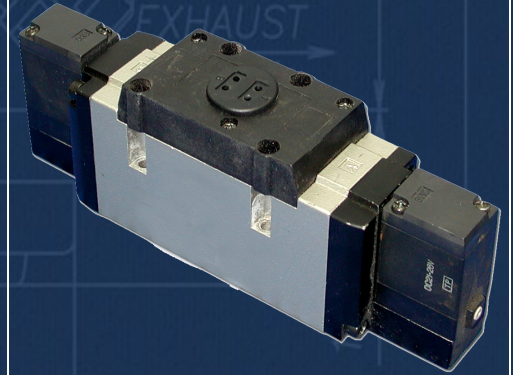
DIN Connection



Remote type



Grommet Connection



YSC-3EX



Pump Controller:

- Simple to Operate
- Self Contained
- NEMA 4 Enclosure
- 4-20 ma Compatible
- Speed Control or Batch Capable
- Versatile - 24VDC or 115VAC, single or dual solenoid operation
- Display - Cycles per minute, total cycles, or flow

Your local distributor:

Yamada[®]

Form# SV0409